



Kerry Rushton

Kerry's work is an evocative, emotional response to her environment past and present.

Landscapes, houses, gardens, conversations, and observations are all created in her distinct, spontaneous expression of colour form and marks.

Here is a retrospective gallery of works currently available.



UNTETHERED II

Mixed media on canvas
Framed in Tasmanian oak
104 x 104cm
\$2100



UNTETHERED III

Mixed media on canvas
Framed in Tasmanian oak
104 x 104cm
\$2100



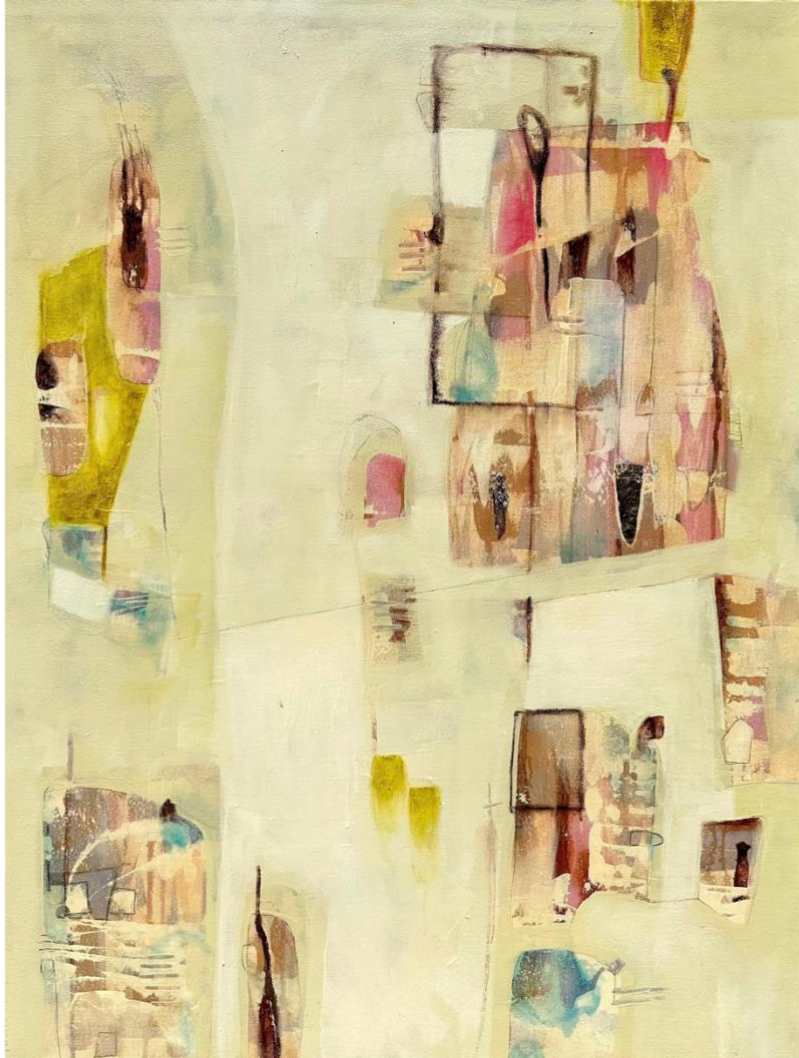
TANGLED UP

Mixed media on canvas
Framed in Tasmanian oak
153 x 86cm
\$2300



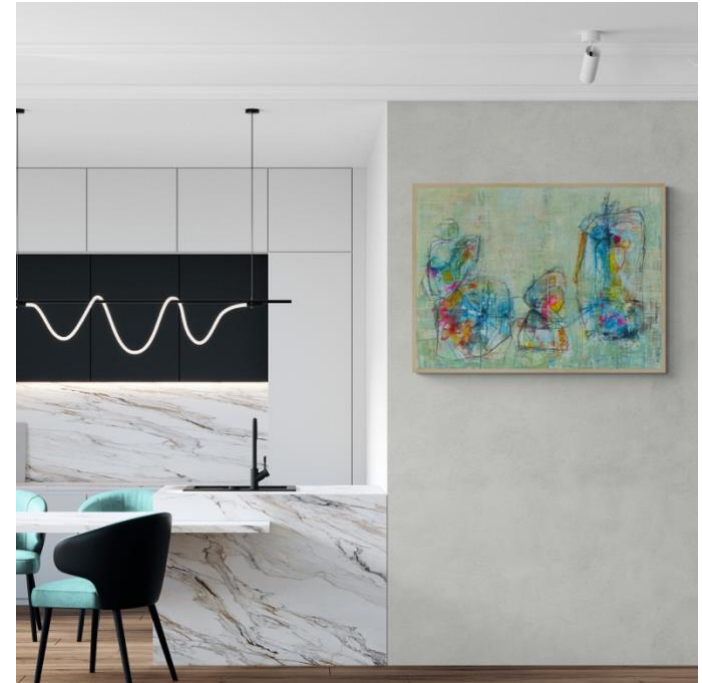
PRESENTS OF MEDINA I

Mixed media on canvas
Framed in Tasmanian oak
79 x 103cm
\$1400



PRESENTS OF MEDINA II

Mixed media on canvas
Framed in Tasmanian oak
79 x 103cm
\$1400



AND HERE WE ARE

Mixed media on canvas
Framed in Tasmanian oak
124 x 94cm
\$2300



AS IT IS

Mixed media on canvas
Framed in Tasmanian oak
124 x 94cm
\$2300



THE DIRECTION OF GRIT I

THE DIRECTION OF GRIT I & II

Mixed media on canvas
Framed in Tasmanian oak
104 x 104cm
\$2100



UNRAVELLED

Mixed media on canvas

Frameless

138 x 112cm

\$2900



SALFORD HOUSE

Mixed media on canvas
Solid black frame
80 x 80cm
\$1300



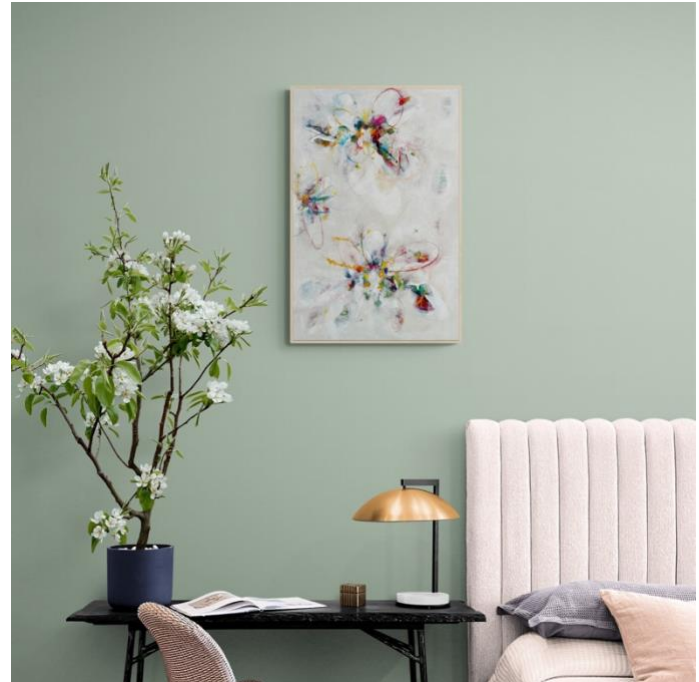
ROUND AND ROUND WE GO

Mixed media on canvas
Framed in Tasmanian oak
80 x 80cm
\$1300



LITTLE SEEDS EVERYWHERE

Mixed media on canvas
Framed in Tasmanian oak
80 x 80cm
\$1300



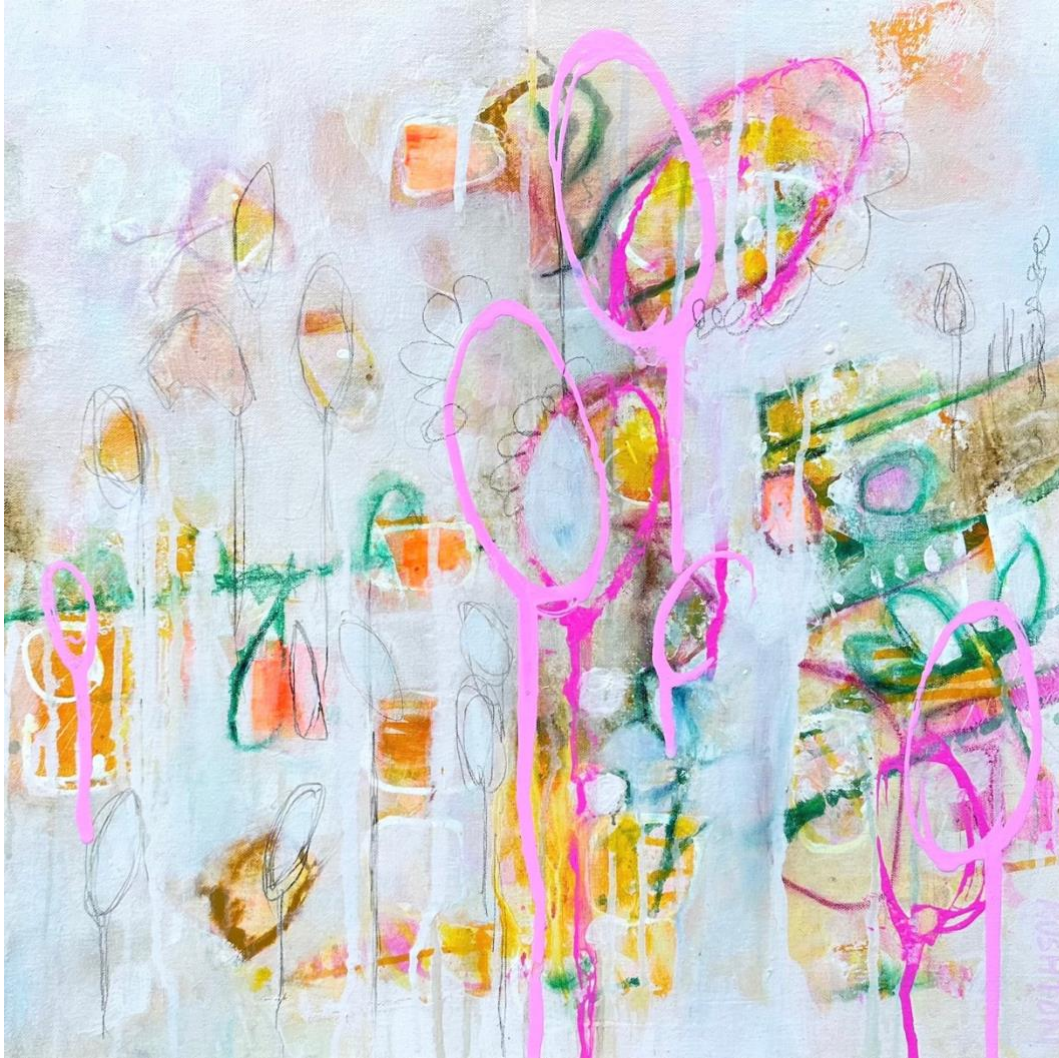
AN ETHEREAL BEAUTY I

Mixed media on canvas
Framed on Tasmanian oak
60 x 90cm
\$1200



AN ETHEREAL BEAUTY

Mixed media on canvas
Framed in Tasmanian oak
64 x 95cm
\$1200



BROKEN MORNINGS

Mixed media on canvas
Framed in Tasmanian oak
53 x 53cm
\$795



THROUGH THE BARRICADES I

THROUGH THE BARRICADES I & II

Mixed media on canvas
Framed in Tasmanian oak
80 x 63cm
\$1200



DAISY MEADOW MONDAY

DAISY DAY MONDAY, TUESDAY & THURSDAY

Mixed media on canvas
Framed in Tasmanian oak
33 x 33cm
\$295